

# Main Page

WebHx - Joe TeddyBear (106999999) - Claim Month January 2005 - Microsoft Internet Explorer

Main Daily Activities Children Menu Planning Claims **Reports** Misc Help

Record In & Out

List Children

Record meals

Review Meals

Enroll Child

Plan Menu Template

Schedule Meals

Submit claim

Slow Internet connection? Click to hide site graphics

start

Inb... Gen... Min... C:\...

Click on Reports

# Claim Foods and Attendance Report

WebHx - Joe TeddyBear (106999999) - Claim Month: January 2005 - Microsoft Internet Explorer

Main Daily Activities Children Menu Planning Claims Reports Misc Help

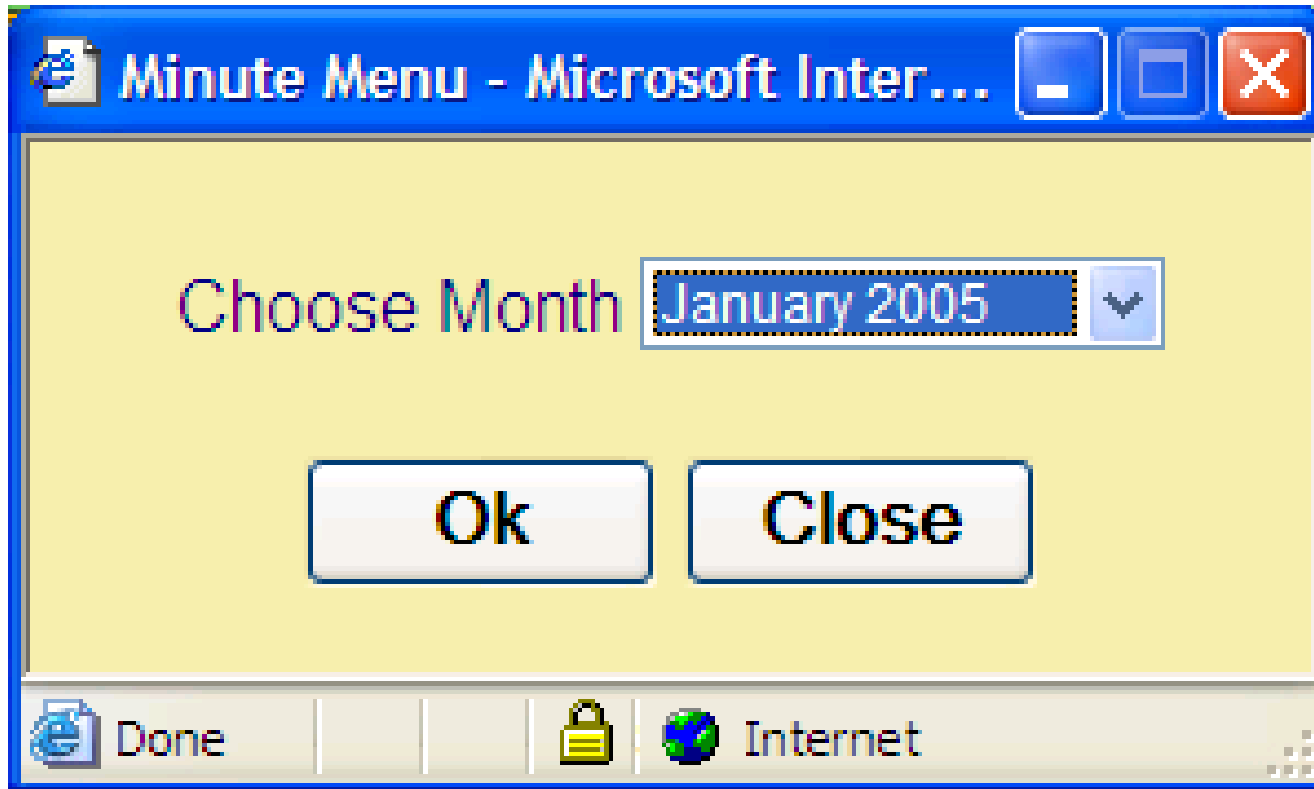
Child  
Claim  
Menu Planning

Daily Meal Worksheet  
Claimed Foods and Attendance

The screenshot shows a web application interface. At the top, there is a blue header bar with the text 'WebHx - Joe TeddyBear (106999999) - Claim Month: January 2005 - Microsoft Internet Explorer'. Below this is a navigation menu with items: 'Main', 'Daily Activities', 'Children', 'Menu Planning', 'Claims', 'Reports', 'Misc', and 'Help'. The 'Reports' menu is expanded, showing three options: 'Child', 'Claim', and 'Menu Planning'. The 'Claim' option is highlighted in blue, and its sub-menu is also expanded, showing 'Daily Meal Worksheet' and 'Claimed Foods and Attendance'. A black oval highlights the 'Claim' and 'Menu Planning' options in the main menu, and a black arrow points from the 'Claimed Foods and Attendance' option to the right. Below the navigation menu is a large, colorful illustration of a park scene. The illustration features a sun with a red apple in the center, a tree on the left, and a tree on the right. In the foreground, there are several circular icons representing different activities: 'Record In & Out' (a child on a slide), 'List Children' (a child building a sandcastle), 'Enroll Child' (a child running), 'Record meals' (a woman at a table), 'Review meals' (a child playing with a dog), and 'Help' (a question mark). At the bottom of the illustration, there are three buttons: 'Plan Menu Template', 'Schedule Meals', and 'Submit claim'. To the right of these buttons is a checkbox labeled 'Slow Internet connection? Click to hide site graphics'.

Choose the Highlighted [Claim, and Claim Foods And Attendance]

# Choosing Claim Month



Choose a claim Month, then Click, OK.

# Report Generating

